

# Complete Skincare Range

FOR DOGS  
AND CATS



# DOUXO<sup>®</sup>S<sup>3</sup>



OPTIMUM  
TOLERANCE



OPTIMUM  
PLEASURE



OPTIMUM  
CONVENIENCE



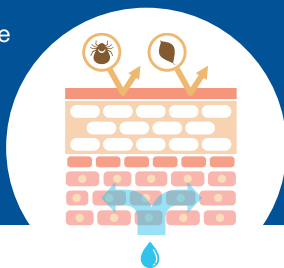
# What is the skin?

The skin is the largest organ of the body. It regulates your pet's temperature and provides a barrier against the environment. It is made up of different layers, structures and microorganisms and it is important to keep all of these balanced to minimise the risk of skin disease developing.

# Why look after your pet's skin

The skin barrier is essential in protecting the body from external irritants as well as regulating body temperature and moisture. It is therefore very important to support and protect the skin before, during and after problems occur.

**DOUXO® S3** contains an innovative new molecule called Ophytrium that helps support and maintain your pet's skin barrier.



# | OPHYTRIUM: EFFICACY



**DOUXO® S3** has a **scientifically proven action on all three barriers of the skin's ecosystem.**

Breakdown of one or more barriers will lead to an imbalance of this ecosystem, causing a range of possible skin disorders such as an itchy, irritated skin, a microbiota imbalance or flaky, oily skin.



# | DOUXO<sup>®</sup>S<sup>3</sup>, created with YOU in mind

DOUXO<sup>®</sup> S3 is a unique new skincare range meeting the needs of today's pet owners.

The design & development of this innovative range is the result of a unique, client-centric selection process and is based on rigorous scientific studies.



**>10 years**  
of DOUXO<sup>®</sup>  
clients experience



**4 market**  
**research**  
specific studies



**>2 000 people**  
included in  
market research



**>8 months**  
of contacts  
with pet owners

We know what's most important to you when it comes to your pet's skin care: **EFFICACY and SAFETY.**

## | OPTIMUM TOLERANCE



When using skincare products, you want to be sure it's safe for your pet – and you.

Soap, nanoparticles,  
sulphate, paraben,  
phthalate, colourant

**FREE**

Hypoallergenic summertime  
fragrance - **Approved**  
**by pet owners**



DOUXO<sup>®</sup> S3 was formulated by veterinary dermatology experts using only the essential ingredients.

# | OPTIMUM PLEASURE



We've also listened to you about the stress that bathing can bring and how you would like to spend more quality time with your pet.

Rather than the hassle of repeatedly bathing your dog or cat, **DOUXO® S3** allows a convenient protocol that will please you – and your pet!

## More mousse, less stress.



### Only 1 Shampoo

to clean the fur and skin



### Mousse 3 times a week

for performance

- > Leave-on for longer lasting direct skin contact
- > Relaxing massage application for pleasant frequent use

# | OPTIMUM CONVENIENCE



We've also created **unique, user-friendly packaging** – thanks to your feedback.

Dosing pump easy to use with one hand

Easy grip even with wet hands

Check the remaining quantity

A stable base to avoid falling



# | HOW TO USE

## DOUXO<sup>®</sup>S<sup>3</sup> Shampoo

1.



Wet thoroughly from the neck down; avoiding the head to prevent water and soap in eyes and ears.

---

2.



Dispense the shampoo onto your hands and massage the animal making sure the shampoo reaches the skin not just the coat.

---

3.



After 5 to 10 minutes, rinse thoroughly from the neck down, leaving the affected areas until last.

---

4.



Finally gently dry their coat, without rubbing, using either a towel or with a hairdryer on a low heat.

---

› Visit [www.douxo.com](http://www.douxo.com) to watch the video on how to use DOUXO<sup>®</sup> S<sup>3</sup> Shampoo and find out tips for your pet to stay calm during the 5 to 10 minutes of application.

# | HOW TO USE

## DOUXO<sup>S3</sup> Mousse



1.

Start by brushing against the natural hair direction.

---



2.

Dispense one or two pumps onto your hand and apply through the coat.

---



3.

Gently massage in the mousse while ruffling the hair to allow the product to penetrate onto the skin.

---



4.

Repeat the first three steps all over the body, avoiding the eyes and mouth. Do not rinse. Allow to air dry. Brush for a shiny coat.

---

› Visit [www.douxo.com](http://www.douxo.com) to watch the video on how to use DOUXO<sup>®</sup> S3 Mousse and know more about its benefits.

# OPHYTRIUM

key ingredient of

# DOUXO® S3



OPHYTRIUM is the **key ingredient** of DOUXO® S3, carefully selected from among several hundred ingredients thanks to our unique and demanding S3 process.

## Safe Skincare Selection



Purified natural ingredient

OPHYTRIUM has been selected for its high tolerance and simultaneous action on all three skin barriers:

**Mechanical skin barrier**  
(keeps allergens, germs and parasites out and water in)

**Microbiological skin barrier or microbiota**  
(a complex mixture of microorganisms that protect against invasion of pathogens)

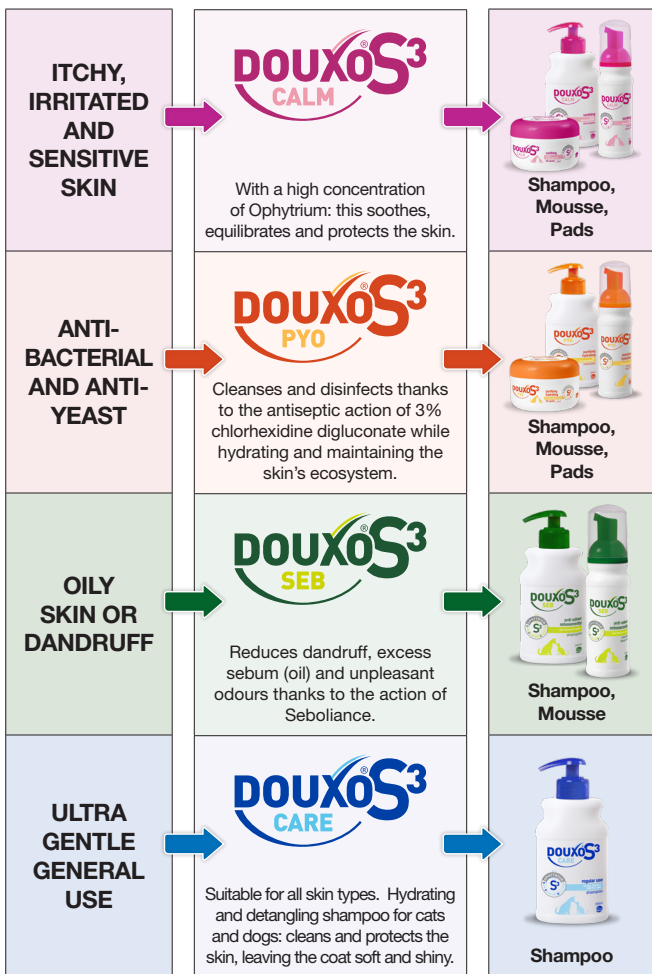
**Immunological skin barrier**  
(reacts to anything that gets through the first lines of defense)



Thanks to its action, Ophytrium:

- › **Maintains the mechanical barrier** for supple, lastingly hydrated skin
- › **Preserves the protective microbial flora** for healthy skin
- › **Helps reduce irritation** for soothed skin

# Shampoo & leave-on Mousse



Visit [www.douxo.com](http://www.douxo.com) to find out more!

Ceva Animal Health Ltd,  
Explorer House, Mercury Park, Wycombe Lane,  
Wooburn Green, High Wycombe, HP10 0HH  
01628 334 056 [www.ceva.co.uk](http://www.ceva.co.uk)

