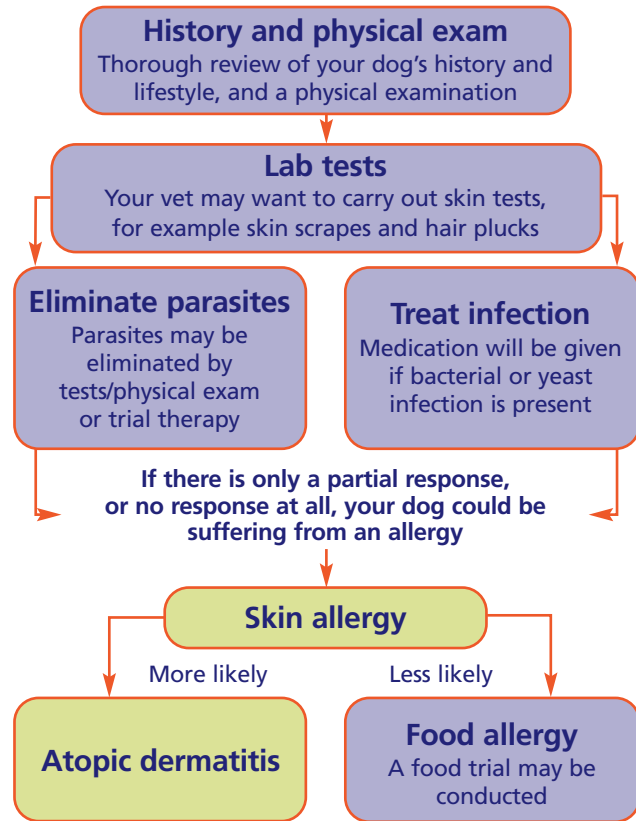


# How your vet will find out what's troubling your dog

Unfortunately there's not always one single, simple test that can confirm the cause of a dog's itchy discomfort. Your vet may want to conduct a series of procedures to reach a diagnosis. For example:



## It's not an overnight result

Some patience is needed when investigating a potential skin condition in dogs. Reaching an accurate diagnosis may take a few weeks.

In some cases, the treatment may be long-term or even life-long, needing regular recheck examination by your vet.

	PARASITES	INFECTION	ATOPIC DERMATITIS	FOOD ALLERGY		
WEEK 1					INITIAL EXAM	
WEEK 2	RESULTS IN 2-4 WEEKS	RESULTS IN 2-4 WEEKS	IMPROVEMENT WITH TREATMENT GENERALLY SEEN WITHIN 2-4 WEEKS	FOOD TRIAL TAKES UP TO 12 WEEKS TO COMPLETE	VETERINARY RECHECK	
WEEK 3					VETERINARY RECHECK	
WEEK 4					VETERINARY RECHECK	
WEEK 5						
WEEK 6			VETERINARY RECHECK			
WEEK 7						
WEEK 8					VETERINARY RECHECK	
WEEK 9						
WEEK 10						
WEEK 11						
WEEK 12						VETERINARY RECHECK
WEEK 13						
WEEK 14						

This chart is meant as a guide. Please consult your vet for specific advice.

Practice stamp

Gnawing at his skin?  
Chewing her paws?  
Rubbing his face?  
Scratching generally?

Does this sound like your dog?  
It could be a skin condition:  
talk to your vet about it today!

[www.itchfree.co.uk](http://www.itchfree.co.uk)

## If only they could talk...

- Rubbing at the face
- Shaking the head and ears
- Chewing and gnawing at the paws
- Generally scratching

...are their way to tell you about a skin condition.



But there are a number of possible causes for your pet's irritation. That's why it's essential to work with your vet to get to the root of the problem – and treat it effectively.

## The most common causes of your dog's discomfort

### ATOPIC DERMATITIS:

your dog may be allergic to environmental substances such as pollen, mould or dust mites. This is a life-long condition that can be 'controlled' but not cured outright.



### SKIN AND/OR EAR INFECTIONS:

your dog's skin or ears may be infected with bacteria or yeast.



### FOOD ALLERGY:

to one or more ingredients in his diet.



### EXTERNAL PARASITES:

such as fleas or mites may be causing the constant itch and irritation to your dog.



Brought to you by Novartis, makers of

**Atopica**<sup>®</sup>